

Advanced Emergency Medicine Training in Taiwan: The Dalin Tzu Chi Experience

WHY TRAIN AT DALIN TZU CHI?



A UNIQUE HUMANISTIC APPROACH

Integrates Tzu Chi's values of holistic, patient-centered care and respect for life.



EXCELLENCE IN A HIGH-ACUITY SETTING

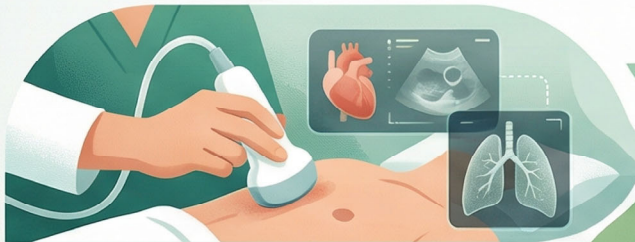
Train at a top-ranked program managing a high volume of critically ill patients.



STRONG RESEARCH & INNOVATION CULTURE

Benefit from a 100% resident publication rate and exposure to innovative care models.

WHAT YOU'LL LEARN & EXPERIENCE



ADVANCED CLINICAL & PROCEDURAL SKILLS

Learn POCUS, ECPR, TEE, and participate in unique "silent mentor" cadaver labs.



MODERN CARE MODELS

Gain experience in Palliative Care and community-based "Hospital at Home" programs.



IMMERSE YOURSELF IN TAIWANESE CULTURE

Explore nearby attractions like Alishan, Sun Moon Lake, and vibrant night markets.

PROGRAM AT A GLANCE



FLEXIBLE DURATION

Standard programs are 4-week blocks, but customized schedules are available.



WHO CAN APPLY?

Ideal for EM residents, specialists, or physicians with clear learning goals.



LEARN MORE & APPLY

Email: df257509@tzuchi.com.tw



Buddhist Tzu Chi Medical Foundation
Dalin Tzu Chi Hospital – Department of Emergency Medicine

I. Introduction to Dalin Tzu Chi Hospital and the Department of Emergency Medicine

Dalin Tzu Chi Hospital is a teaching hospital under the Buddhist Tzu Chi Medical Foundation, located in Chiayi County, a county in Southern Taiwan. As one of the designated critical care providers in Chiayi County, it serves as a referral center for acute and critically ill patients and plays a key role in strengthening regional emergency care capacity. The Emergency Department operates 24 hours a day, year-round, providing emergency medical services for residents of nearby townships and remote rural communities. In addition to clinical care, the hospital is also committed to education and research, serving as an important base for training healthcare professionals and promoting regional health.

The Department of Emergency Medicine of Dalin Tzu Chi Hospital is a clinical service unit providing comprehensive emergency care includes critical care and resuscitation, clinical Extracorporeal cardiopulmonary resuscitation (ECPR), transesophageal echocardiography (TEE), point-of-care ultrasound (POCUS), ultrasound-guided nerve blocks and regional anesthesia, palliative care and home-based acute care (“Hospital at Home”), disaster medicine and prehospital medicine, medical education, and clinical research. This diverse composition enables the department not only to manage a broad spectrum of complex emergency cases, but also to provide structured, tiered clinical teaching and research mentorship for trainees.

The department is committed to patient-centered, holistic care, integrating the



humanistic values of Tzu Chi and putting into practice, in daily work, the idea of “respecting life and safeguarding body and mind.” We emphasize respect, empathy, and professionalism, caring not only for patients’ physical conditions but also for their psychological well-being, family situation, and social context. On this foundation, the Department of Emergency Medicine actively develops simulation-based education, multidisciplinary team collaboration, and academic research, with the aim of training emergency physicians who combine strong clinical competence with genuine humanistic concern, and of providing both domestic and international learners with a learning environment that is both rigorous and warmly supportive.

Beyond academic training, trainees can experience Taiwan's rich cultural heritage during leisure time, including traditional cuisine, vibrant night markets, and a uniquely safe, welcoming environment reflecting diverse Chinese and Japanese influences. The hospital's strategic location provides convenient access to iconic destinations including Alishan's sunrise views, Yushan (Northeast Asia's highest peak), Tainan's historic temples, and Sun Moon Lake's tranquil scenery.

<https://dalin.tzuchi-healthcare.org.tw/index.php/teams/2022-11-02-02-41-39>

I. Program Mission and Objectives

1. The mission of this training program is introducing Taiwan’s emergency and critical care system, and, by integrating the educational resources of Dalin Tzu Chi Hospital with the humanistic spirit of Tzu Chi, to cultivate emergency physicians who possess solid professional knowledge, strong clinical skills, genuine humanistic concern, and a deep sense of social responsibility.

2. To understand how emergency physicians in a rural hospital setting efficiently utilize various resources—such as bedside ultrasound, transesophageal echocardiography, ultrasound-guided nerve blocks, ECPR,

and modern emergency/critical care technologies—as well as care models such as



Hospital at Home and palliative medicine, and to learn how to apply these appropriately within a healthcare system that emphasizes safety, effectiveness, and affordability.

3. To make use of resources within the Tzu Chi Foundation by participating in cadaver-based workshops (“silent mentor” / cadaver lab) for learning resuscitative procedures such as advanced airway management (such as SALAD maneuver), pericardial window, canthotomy, cystotomy, and various nerve blocks.

4. To establish future opportunities for collaboration in research and education with the Tzu Chi Medical Foundation and its affiliated healthcare system.

III. Program Leadership and Key Supervisors

Department of Emergency Medicine – Director: **Prof. Yi-Kung Lee**

Program Director (Training Curriculum): **Dr. Su Weng Chau**

IV. Training Content

1. Pre-training Orientation

On the first day of training, a representative of the Department of Emergency Medicine Education Committee or a designated attending physician will provide an orientation, including: an introduction to the physical layout of the Dalin Tzu Chi Emergency Department (resuscitation area, observation area, ENT and OB/GYN rooms, etc.); duty types and working hours; as well as the roles and responsibilities of trainees and the patient safety and infection control regulations that must be followed during the attachment/observership.

2. End-of-Program Debriefing

During the final week of training, the Department of Emergency Medicine Education Committee will hold an end-of-program debriefing session.

Supervising attending physicians and participating trainees will be invited to review their learning experience in the Dalin Tzu Chi Emergency Department, including clinical



care, procedural skills, ultrasound training, and academic activities. The discussion will focus on both achievements and challenges, and will serve as a basis for refining the content and teaching methods of the international training program. Written feedback and recommendations for further improvement or future training may be provided as needed.

3. Training Duration and Schedule

For international emergency medicine visitors—including foreign physicians and medical students—training in the Dalin Tzu Chi Emergency Department is generally organized in 4-week blocks. However, other flexible durations can be arranged, and we are able to customize the schedule based on the needs of the trainee and the sending institution. Clinical learning primarily takes place during daytime ED shifts, with approximately 14–15 shifts per month, and all working hours are fully compliant with Taiwan’s residency training regulations and labor laws. For short-term observerships, daily on-site hours and learning activities are arranged with greater flexibility, tailored to each trainee’s learning objectives and length of stay.

4. Teaching Activities (primarily conducted during weekday daytime shifts)

(1) Clinical Learning

Training takes place in various areas of the Emergency Department, including the resuscitation area, acute care area, pediatric area, and observation unit. Trainees will follow attending physicians and senior residents to participate in bedside patient assessment and care, discuss diagnosis and management plans, and practice common procedures (such as nasogastric tube insertion, Foley catheterization, wound suturing, and basic splinting/casting). Through this process, they progressively develop clinical judgment and comprehensive care capabilities for patients across all triage levels.

(2) Subspecialty and Procedural Learning

According to each participant’s level and learning needs, faculty with relevant expertise will arrange subspecialty training and procedural teaching. Topics may include: emergency point-of-care ultrasound, extracorporeal cardiopulmonary resuscitation (ECPR),



transesophageal echocardiography (TEE), ultrasound-guided nerve blocks and regional anesthesia, emergency critical care and resuscitation, prehospital care and disaster medicine, as well as palliative care and Hospital-at-Home models.

Teaching formats include bedside instruction, small-group discussions, simulation-based training, and live procedural demonstrations, with short-term observerships in related units arranged as needed.

(3) Academic Activities

Trainees are required to participate in regular academic activities organized by the Department of Emergency Medicine and the hospital. Within the department, weekly academic morning conferences and case discussions are held (mainly on Wednesdays and Thursdays from 07:30–09:30), covering case presentations, morbidity and mortality (M&M) reviews, ECG and imaging conferences, core curriculum lectures, and journal clubs. In addition, trainees attend the hospital-wide lecture every Tuesday from 07:30–08:30.

If a trainee is assigned to present, they are expected to complete their slides at least one week in advance and review them with their supervising physician. Through these activities, trainees strengthen their evidence-based medicine concepts, communication and presentation skills, and clinical reasoning abilities.

(4) Cadaver-Based Simulation (Cadaver Lab)

Our department organizes cadaver-based simulation workshops for residents approximately three times a year to practice resuscitation-related procedures. If such sessions fall within the training period, visiting trainees may be given the opportunity to participate, allowing them to learn key life-saving techniques in a cadaver lab setting and to experience how Tzu Chi's humanistic spirit is embodied through respect and gratitude toward the "silent mentors" who donate their bodies for medical education.

(5) Leisure and Cultural Activities

Our Emergency Department regularly provides weekend outreach services to rural



clinics. For trainees interested in experiencing rural primary care support and telemedicine in remote areas, visits can be arranged flexibly outside of core clinical training time. During their days off, trainees can immerse themselves in Taiwan's rich cultural and culinary scene—from traditional Taiwanese cuisine and vibrant night-market culture to the island's uniquely warm, friendly, and safe environment. Thanks to Taiwan's diverse historical influences, visitors can also experience both traditional Chinese heritage and Japanese cultural elements through regional travel.

In addition, our hospital is located close to several of Taiwan's must-see destinations. Trainees can watch the breathtaking sunrise at the world-famous Alishan Scenic Area, hike Yushan—the highest peak in Northeast Asia, explore historic temples and ancient streets in Tainan, or enjoy the tranquil beauty of Sun Moon Lake—all easily accessible during their stay.

V. Training Environment and Distinctive Features of Our Department of Emergency Medicine

- Residents are trained in an undifferentiated “all-comers” model. With the exception of women in active labor, most adult and pediatric medical, surgical, obstetric-gynecologic, and many ENT emergencies are initially assessed by frontline emergency physicians. This comprehensive training prepares graduates to practice independently in both private practice and rural or resource-limited settings.
- In recent years, Dalin Tzu Chi has ranked among the top three hospitals nationwide in official evaluations of emergency medicine residency training programs, and our residents have consistently placed among the top performers in national competitions in emergency ultrasound and electrocardiography.
- The patient population consists largely of elderly and critically ill patients, with a high proportion of high-acuity cases, providing an excellent environment for developing critical care competence and sound clinical judgment.
- The department is an accredited AHA ACLS Training Center and works closely



with board-certified palliative care physicians and a Hospital-at-Home program, enabling trainees to gain experience in critical care, palliative care, and community-based acute care at the same time.

- The department has a strong research culture. Over the past five years, the SCI publication rate among residents has reached 100%, and more than 50 POCUS image reports have been published in *Annals of Emergency Medicine*. Related research has also been published in *JAMA* and the *JAMA* family of journals.

VI. Eligibility

1. Hold a foreign healthcare professional qualification and a valid professional license (e.g., medical license, specialist certification, etc.).
2. Applicants to the Department of Emergency Medicine at Dalin Tzu Chi Hospital are preferably emergency medicine residents, emergency medicine specialists, or physicians with clearly defined learning goals in emergency medicine.
3. Demonstrate good academic and professional performance, with no major adverse records.
4. Be in good health and free of serious communicable diseases; applicants for longer training periods must comply with the hospital's occupational health and infection control-related medical screening requirements.
5. Have basic communication skills in English or Chinese sufficient to understand teaching content and clinical instructions; limited Chinese proficiency should be indicated at the time of application.

VII. Application Process and Required Documents

Applicants to the International Emergency Medicine Training and Exchange Program at Dalin Tzu Chi Hospital should prepare the following documents (in Chinese or English; both electronic and hard copies are recommended):



1. Dalin Tzu Chi Hospital Application Form for Foreign Healthcare Professionals

- Includes personal information, education and training history, current position, intended department (e.g., Department of Emergency Medicine), proposed training period, learning plan, and self-introduction.
- A recent passport-style photograph should be attached.

2. Copy of Passport

- The passport must be valid for the entire intended period of stay in Taiwan.

3. Copy of Professional License

- For example, medical license, specialist certificate, nursing license, etc.; a Chinese or English translation should be provided if necessary.

4. Certificate of Employment / Service

- Issued by the current hospital or medical school, indicating the applicant's position and years of service.
- The date of issue should be within six months prior to the application date.

5. Proof of Enrollment or Training (if applicable)

- For applicants who are residents, research fellows, or trainees, official documentation of current training status should be provided.

6. Curriculum Vitae (CV)

- Including education, professional experience, areas of expertise, and academic publications (if any).



7. At Least One Letter of Recommendation

- Written by the current supervisor, program director, or head of the teaching unit, commenting on the applicant's character, professional competence, and motivation for joining the program.

8. Health Examination Report

(to be submitted according to length of stay and relevant regulations; in principle, it should include):

- Chest X-ray (tuberculosis screening).
- Serologic test for syphilis.
- Evidence of immunity or vaccination against measles, mumps, and rubella (MMR).
- Hepatitis B–related tests or vaccination records.
- Other tests as required by Dalin Tzu Chi Hospital's occupational health and infection control policies.

9. Proof of Medical and Accident Insurance

- Insurance coverage must extend throughout the entire period of stay in Taiwan, with benefit limits and scope meeting hospital and regulatory requirements.

10. Other Documents Required by the Hospital or Host Department

- Such as proof of language proficiency, research and/or teaching proposals, and a list of academic publications.

VIII. Obligations of Applicants / Trainees

1. During the training period at Dalin Tzu Chi Hospital, foreign healthcare professionals may not, under any circumstances, independently perform medical acts in



their own name, nor may they sign medical records, prescriptions, laboratory or imaging request forms, or any other medical documents with legal effect.

2. Trainees must comply with all hospital regulations, including but not limited to: patient privacy and confidentiality of medical information, infection control, occupational safety, ethical standards, and safety management.

3. While in the hospital, trainees must wear the identification badge issued by Dalin Tzu Chi Hospital and dress in appropriate clinical attire as required by each unit.

4. All medical information, case data, and research material accessed during the training period are strictly confidential. Trainees have a duty of confidentiality and may not disclose or use such information for any other purpose without prior written approval from the hospital.

5. If a trainee violates hospital regulations or engages in behavior that affects patient safety or the quality of care, the hospital may, depending on the severity of the situation, issue a warning, restrict the trainee's scope of activity, or terminate the training, and may notify relevant institutions as appropriate.

IX. Fees and Accommodation

1. Whether foreign healthcare professionals are required to pay administrative fees, tuition/teaching fees, insurance premiums, or other related charges will be determined according to Dalin Tzu Chi Hospital's established standards or case-by-case agreements, and will be clearly stated in the letter of acceptance.

2. Arrangements and fees for accommodation (e.g., on-site dormitories) and meals are set according to hospital policy. Applicants may decide whether or not to use the accommodation options provided by the hospital.



X. Contact Information

For further information about the training program or to arrange an observership, please contact:

- Ms. Chen, Administrative Staff, Department of Emergency Medicine
- Tel: +886-5-264-8000 ext. 5838
- Email: df257509@tzuchi.com.tw

We warmly welcome healthcare professionals with a passion for emergency medicine to join the Department of Emergency Medicine at Dalin Tzu Chi Hospital.



佛教慈濟醫療財團法人大林慈濟醫院 急診醫學部

國際急診醫學訓練與交流計畫簡介

一、 大林慈濟醫院與急診醫學部簡介

大林慈濟醫院為佛教慈濟醫療財團法人旗下之準醫學中心醫院，位於嘉義縣大林鎮，座落於雲嘉南交界的鄉鎮型社區。醫院重度急救責任醫院之一，肩負區域內急重症轉診與緊急醫療量能提升的任務，全年 24 小時提供急診醫療服務，照顧鄰近鄉鎮與偏遠地區的民眾。除了臨床醫療之外，同時承擔教學與研究功能，是培育醫療人才與推動區域健康的重要據點。

急診醫學部為一級醫療單位，具備完整的急診專業與多元次專科背景。團隊成員涵蓋重症醫學與急救、臨床與 ECPR、經食道心臟超音波、急診床邊超音波（POCUS）、超音波導引神經阻斷與區域麻醉、安寧療護與在宅急性照護（Hospital at Home）、災難醫學與 EMS、醫學教育以及臨床研究等領域。這樣的組成，讓科內不僅能處理多樣化且高度複雜的急診病人，也能提供系統化、層次分明的臨床教學與研究指導。

科內重視以病人為中心之全人照護，結合慈濟人文精神，在日常工作中落實「尊重生命、護持身心」的理念。強調尊重、同理與專業，不僅關注病人的生理狀態，也關懷其心理、家庭與社會處境。在此價值基礎上，急診醫學部積極發展模擬醫療教學、多專科團隊合作與學術研究，希望培養兼具臨床能力與人文關懷的急診專科醫師，同時也提供國內外學員一個具深度與溫度的學習環境。

<https://dalin.tzuchi-healthcare.org.tw/index.php/teams/2022-11-02-02-41-39>

二、 計畫宗旨及目標

(一) 本訓練計畫之宗旨，了解台灣急診醫學及重症醫學的照護系統，結合大林慈濟醫院之教學資源與慈濟人文精神，培養具備專業知識、臨床技能、人文關懷與社會責任之急診專科醫師。



(二) 認識偏鄉醫院，急診醫師如何有效率應用各式資源，如床邊超音波、經食道心臟超音波、超音波導引神經阻斷、體外心肺復甦術（E-CPR）等現代急診與重症照護技術，及使用 hospital at home, palliative medicine 等照護架構，並能在安全、有效與成本效益兼顧之醫療體系中適當運用。

(三) 結合慈濟基金會資源，參與大體老師(cadaver lab)學習 resuscitative procedure, 如 pericardial window, canthotomy, cystotomy, nerve blocks.

(四) 與慈濟醫療志業群建立未來研究與教學的合作機會

三、 計畫相關主管

急診部 部長 李宜恭 副教授

教學計劃主持人 周樹榮 醫師

四、 訓練內容

1. 職前訓練

訓練第一天由急診醫學部教育委員會代表或指定主治醫師，介紹大林慈濟急診之空間配置（重症區、一般診療區、留觀區、隔離室、小兒診間、急救室、耳鼻喉及婦產診間等）、科部組織架構與工作分工、班別與上班時間、資訊系統及醫囑開立方式、常用檢驗與影像流程、超音波及重要醫療設備之使用與清潔原則，以及進修／見習期間應遵守之職責與病人安全、感染管制相關規定。

2. 期末座談

訓練最後一週由急診醫學部教育委員會召開期末座談會，邀集指導主治醫師與受訓學員共同回顧在大林慈濟急診之學習經驗，討論臨床照護、程序操作、超音波訓練與學術活動等面向之收穫與困難，作為日後調整國際訓練內容與教學方式之參考。必要時並提供書面回饋與結訓建議。

3. 訓練時間

國際急診住院醫師或外籍醫師／醫學生於大林慈濟急診之訓練原則以四週為一單位，可依委



託醫院與本科討論調整實際訓練期間。平時臨床學習以白班值勤為主，每月排班約 14–15 班，整體工時須符合台灣住院醫師訓練規範及勞動相關法令；短期見習學員則依個別訓練目標與滯留時間，彈性安排每日進修時段與學習內容。

4. 教學活動（原則上於平日白班時段進行）

（1）臨床學習

學習場域包括急診重症區、一般診療區、小兒急診區、觀察病房及急救室等，由學員隨同主治醫師與資深住院醫師實際參與病人評估與照護，討論病人之診斷與處置，並練習常見操作（如鼻胃管、導尿管、傷口縫合、石膏與副木固定等），逐步培養對各級急診病人的臨床判斷與整體照護能力。

（2）次專長與程序學習

依學員程度與需求，由具專長之主治醫師安排次專長訓練與程序操作教學，內容可涵蓋：急診床邊超音波（FAST、腹部、心臟、肺部、血管等）、體外心肺復甦術（E-CPR）、經食道超音波、超音波導引神經阻斷與區域麻醉、急診重症與復甦、院前急救及災難醫學、安寧與在宅急性照護等。課程型態包括床邊教學、小組討論、模擬訓練與臨床操作示範，並視需要安排至相關單位短期見習。

（3）學術活動

受訓學員須參與急診醫學部及院內規律之學術活動。急診科內每週固定舉辦學術晨會與病例討論（多集中於週三、週四 07:30–09:30），內容包含病例報告、死亡及併發症討論、心電圖與影像會議、核心課程與文獻討論等；另需參加每週二 07:30–08:30 之院級演講。若學員被排定負責報告，須於會前至少一週完成簡報並與指導醫師討論。藉由這些活動，強化學員之實證醫學觀念、溝通表達與臨床推理能力。



(4) 大體模擬手術 (Cadaver lab)

本院急診一年會安排三次住院醫師的大體模擬手術，練習急救相關技巧，若安排於相關月份，可參與大體模擬手術學習急救技巧，以及慈濟人文於大體老師的體現。

(5) 休閒娛樂

本院急診致許多偏鄉進行假日駐診，若想體驗偏鄉衛生站醫療支援以及遠距醫療，課程之餘，可彈性安排參訪。另外，於假日期間，可至本院附近的著名景點觀光旅遊，譬如台灣著名的阿里山看日出、台南看傳統中國古蹟、日月潭旅遊等。

五、 訓練環境與特色

- 住院醫師採「不分科全部都看」之看診模式，除臨產孕婦外之內外婦兒與五官科急症皆由急診第一線評估，訓練完整且未來無論開業或偏鄉服務皆能獨立行醫。
- 近年急診住院醫師訓練醫院訪查成績名列全國前三名；住院醫師在超音波與心電圖全國競賽皆獲得前幾名。
- 病人族群以高齡與重症患者為主，重症比例高，為培養重症能力與臨床判斷的絕佳場域。
- 具 AHAACLS 訓練中心資格，並有安寧專科醫師與「Hospital at home」計畫，可同時取得重症、安寧與社區急性照護經驗。
- 研究風氣良好，近五年住院醫師 SCI 發表率 100%，亦有超過 50 篇 POCUS Image 發表於 Annals of Emergency Medicine，相關文獻也曾發表於 JAMA and JAMA series。

六、 申請資格

1. 具外國醫事人員資格，並持有有效醫事專業證書（如醫師證書、專科醫師證書等）。
2. 申請來大林慈濟醫院急診醫學部進修者，以急診醫學住院醫師、專科醫師，或對急診醫學有明確學習目標之醫師為優先。



3. 學習與在職表現良好，無重大不良紀錄。
4. 健康情形良好，無嚴重傳染性疾病；進修期間較長者須符合本院職業安全與感染管制相關健康檢查規定。
5. 具基本英文或中文溝通能力，能理解教學內容與臨床指示；若中文能力有限，應於申請時註明。

七、申請流程與準備文件

1. 大林慈濟醫院外國醫事人員申請表

- 含基本資料、學經歷、目前職務、預計進修科別（如急診醫學部）、預定期間、學習計畫與自我介紹。
- 附近期證件照片。

2. 護照影本

- 須為仍在有效期間之護照。

3. 醫事專業證書影本

- 如醫師證書、專科醫師證書、護理師證書等，必要時附中文或英文譯本。

4. 在職／服務機構證明

- 由現服務醫院或醫學院出具，內容應載明職稱與服務年資。
- 出具日期以申請日前六個月內為限。

5. 在學或訓練證明（如適用）

- 如申請人為住院醫師、研究醫師或在訓學員，應檢附訓練中證明文件。

6. 履歷表（Curriculum Vitae）

- 含學歷、經歷、專長領域及學術著作（如有）。



7. 推薦信至少一封

- 由現任主管、訓練計畫主持人或教學單位主管出具，說明申請人品行、專業能力與進修動機。

8. 健康檢查報告（依停留期間及規定檢附）

原則應包含：

- 胸部 X 光（肺結核篩檢）。
- 梅毒血清檢查。
- 麻疹、腮腺炎、德國麻疹抗體或疫苗接種證明。
- B 型肝炎相關檢查或疫苗接種證明。
- 其他依本院職業安全與感染管制規定要求之檢驗。

9. 醫療及意外保險證明

- 應涵蓋在台全程期間，保額及範圍需符合本院或相關法規要求。

10. 其他本院或接待科別要求之文件

- 如語言能力證明、研究／教學計畫、學術著作列表等。

八、申請人配合事項

1. 外國醫事人員於本院進修期間，不得以任何名義獨立執行醫療行為，亦不得簽署病歷、處方、檢驗單或任何具法律效力之醫療文件。
2. 進修人員應遵守本院各項規章，包括但不限於：病人隱私與醫療資訊保密、感染管制、職業安全、倫理規範及安全管理等。
3. 進修人員於本院內應佩戴本院核發之識別證，並依各單位規定穿著適當之醫療服裝。
4. 對於在進修期間所接觸之醫療資訊、個案資料及研究資料，進修人員負有保密義務，非



經本院書面同意不得擅自對外公開或作其他用途。

5. 如有違反本院規定、影響病人安全或醫療品質之情事，本院得視情節輕重予以警告、限制活動範圍，或終止進修資格，並通報相關單位。

九、 費用與住宿

1. 外國醫事人員是否需繳交行政處理費、教學費、保險費或其他相關費用，依本院另訂之標準或個案約定辦理，並於錄取通知時說明
2. 住宿（如院內宿舍）及膳食相關安排與費用，由本院統一訂定原則，申請人得自行選擇是否接受本院提供之住宿方案。

十、 聯絡方式

如欲進一步了解訓練內容或安排見習，歡迎與我們聯繫：

- 急診醫學部 行政陳小姐
- 電話：05-2648000 分機 5838
- Email：df257509@tzuchi.com.tw

期待對急診醫學充滿熱忱的你，一起加入大林慈濟急診醫學部的行列。